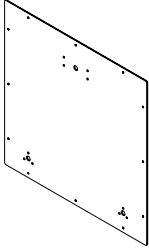



Decorative Aluminum Panel Installation Manual

DECOR BOARD AL6061

Decor Board AL6061 Decorative Aluminum Panel List

	Image	Name of Product	Specification	Quantity
1		Decor Board AL6061	300x300x3 mm	1
2		3M Metal Hooks	35x15x16 mm	1

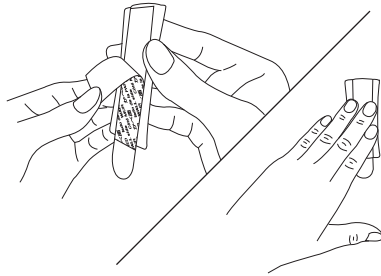
Installation Guideline



1. Clean the surface of hanging spot.

Clean the surface with alcohol pad. Ensure the surface is clean and even.

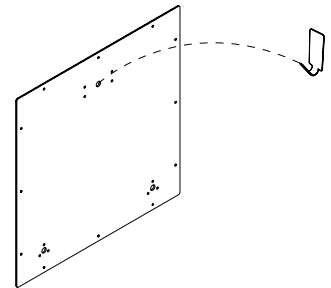
Important: Please use dry towel for concrete wall and painted wall. Do not use alcohol pad.



2. Fixed the 3M metal hooks

Let it dry. Remove back liner. Apply strip to the wall. Press entire strip firmly for 30 seconds. (For more details, please read the installation guideline on the back of package)

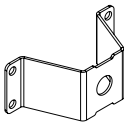
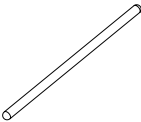
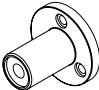
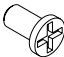
Note: The white frame hook in 3M package can be use according to the degree of the safety of the sticking.



3. Hang the Aluminum Panel

After the hook is stationary for 24 hours, the mounting holes of the aluminum alloy decorative panel can be aligned with the hook, and please ensure the hook is stable before it can be used.

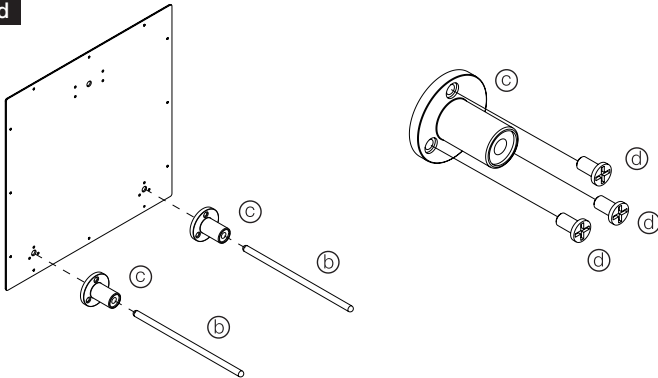
Decor Board AL6061 Aluminum Panel Accessories Package List

	 Ⓐ U-shaped hanger	 Ⓑ Desktop stand	 Ⓒ Pedestal	 Ⓓ M2.5 screw
Table and Vertical Accessories Package	—	2	2	8
Stereo-Hanging Accessories Package	1	—	2	12
Full Accessories Package	1	2	2	12

Installation steps

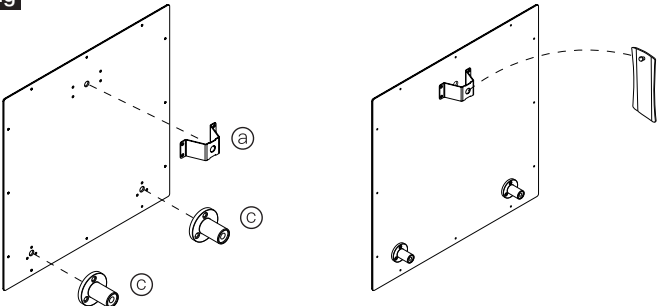
Note: Please refer to the purchased accessories package for installation.

Desktop-stand



Aligned Ⓒ to the hole position, slightly lock the Ⓓ on the back of the aluminum alloy decorative panel and insert Ⓑ into Ⓒ to complete the installation.

Stereo-hanging



Align Ⓐ and Ⓒ to the hole position of aluminum alloy decorative panel, and use Ⓓ to lock, then hang on 3M metal hook to complete the installation.

Safety Instruction

In order to ensure the safety of user and others, this notice documented the important instruction and warning. Users are requested to follow the instruction.

1. Please install it on a flat and even wall. The inclined walls may result in the drop of the aluminum alloy panel due to insufficient suspension strength.
2. Please make sure the wall nails are in the correct hole position after installation.
3. Please check the status of hanger regularly. If the screw is loose, please re-lock it as to avoid the potential injury caused by the falling of the aluminium alloy decorative panel.
4. Wipe the wall clean before pasting the 3M metal hook. After pasting, please let it stands for 24 hours before hanging the aluminum panel. If it drops due to hanging of other heavy objects, it will not bear any legal responsibility.
5. For further instruction, please read the “Installation Guideline” in detail and ensure it steps up correctly.
6. Packaging materials should be recycled and disposed of in accordance with the official recycling prescribed by local region.
7. Please read the instructions for all accessories and make sure they are installed in accordance with the installation steps.
8. Please ensure the screw is locked in the correct hole after installation.
9. If there is a sign of loosening, please confirm whether the screw is loosened and re-lock it.
10. Do not install with screw that does not conform to specifications, which may cause surface damage of aluminum alloy panel.